



Fischer Panda[®]

Power
wherever
you are[™]

| A - General technical data Marine Generator - Panda 40 YA PMS | | |
|---------------------------------------------------------------|--------------------------------------------------|-------|
| Model: | Panda 40 YA PMS | |
| Area of Application: | M (Marine Generator) | |
| Generator Version: | PMS | |
| Generator Type: | PSA - Premium Line - Panda Standard Asynchronous | |
| Frequency: | 50 | [Hz] |
| Nominal Speed: | 3000 | [rpm] |
| Alternator Standard Version: | | |
| Nominal Performance: | 35 | [kW] |
| Nominal Performance: | 41 | [kVA] |
| Continuous Performance | 31.5 | [kW] |
| Continuous Performance | 37.1 | [kVA] |
| | | |
| B - Alternator General Data | | |
| Power rating factor Cos Pi | 0.85 | |

Fischer Panda UK Ltd. 17 Blackmoor Road,
Ebble Industrial Estate, Verwood. Dorset BH31 6AX
Tel: +44 (0)1202 820840 Fax: +44 (0)1202 828688
www.fischerpanda.co.uk



Fischer Panda[®]

*Power
wherever
you are*[™]

| | | |
|----------------------------------------------------|--------------------------------|--------|
| Voltage Regulation | VCS | |
| Voltage Tolerance with VCS (up to 80% Performance) | ± 3 | [Volt] |
| Generator manufacturer | FISCHER PANDA | |
| Shielded to prevent radio interference | accordance with VDE 0875 | |
| Isolation class of windings | F | |
| Excitation by | MKP Capacitors | |

C - Performance Data for electrical Generator (Alternator)

Daten HP3 Coil (Three Phase Version) - Optional - This version available on request

Alternator Type "HP3" (High Performance 3 phase winding). Produces 3-phase current (400 V), but 230 V single phase is included, but must be distributed to 3 phases.

| | | |
|------------------------------|---------|--------|
| Alternator Type | HP3 | |
| Nominal Voltage in Volt | 3x400+N | [Volt] |
| Nominal Performance in kW | 35.00 | [kW] |
| Nominal Performance in kVA | 41.2 | [kVA] |
| Continuous Performance in kW | 31.5 | [kW] |

Fischer Panda UK Ltd. 17 Blackmoor Road,
Ebblake Industrial Estate, Verwood. Dorset BH31 6AX
Tel: +44 (0)1202 820840 Fax: +44 (0)1202 828688

www.fischerpanda.co.uk



Fischer Panda[®]

*Power
wherever
you are*[™]

| | | |
|------------------------------------------------------------|----------------------------------------------|-------|
| Continuous Performance in kVA | 37.1 | [kVA] |
| Number of Phases | 3 | |
| Rated current each Phase in Ampere | 59.5 | [A] |
| Continuous current each Phase in Ampere | 53.6 | [A] |
| Frequency in Hertz | 50 | [Hz] |
| D - Dimension Sound cover (generator housing) | | |
| Capsule MPL 4DS - Standard Sound Insulation Capsule | | |
| Description | MPL 4DS | |
| Material | MPL (Stainless Steel Strip 1.4301 / K240) | |
| Sound Insulation Material | 4DS - 4 to 5 layers, thickness approx. 40 mm | |
| Dimensions Housing L x W x H *) | 1220 x 650 x 820 | [mm] |
| Sound pressure level at distance 7 m | 57 | [dBA] |
| Sound pressure level at distance 3 m | 67 | [dBA] |
| Sound pressure level at distance 1 m | 71 | [dBA] |
| Total Weight of Generator with Capsule | 704 | [Kg] |

Fischer Panda UK Ltd. 17 Blackmoor Road,
Ebblake Industrial Estate, Verwood. Dorset BH31 6AX
Tel: +44 (0)1202 820840 Fax: +44 (0)1202 828688
www.fischerpanda.co.uk



Fischer Panda[®]

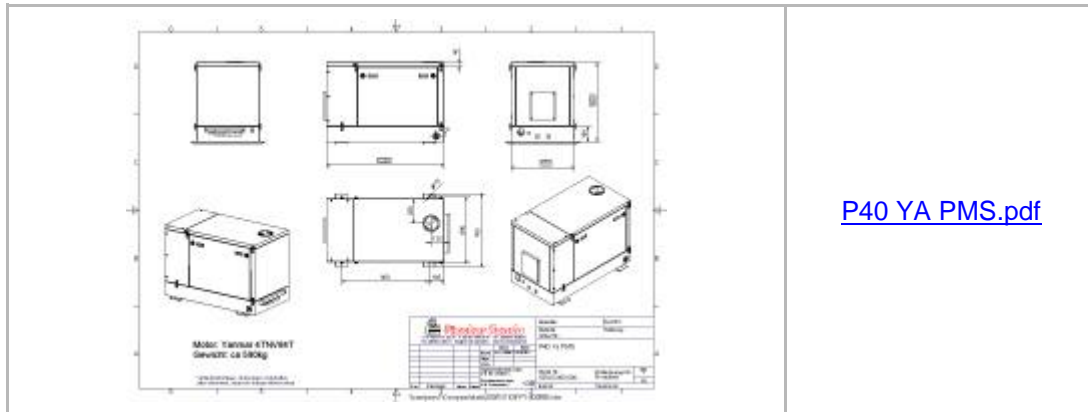
*Power
wherever
you are*™

*) The dimensions are for the sound insulation housing ONLY and do not include additional parts or fittings such as fasteners, closures or mounting brackets etc.
Therefore please Note You must consider the additional space will need to be calculated for the installation. This is of importance when planning the installation with respect of cables, hoses and mounting feet.

E - Engine Data

| | | |
|----------------------|---------|-------|
| Engine Manufacturer | Yanmar | |
| Group | | |
| Engine Type | 4TNV84T | |
| No. Cylinders | 4 | |
| Bore and Displacment | | [ccm] |

Capsule Drawings



Disclaimer

All technical data and specifications including dimensions, performance data, weight and material specifications are only valid when they are explicitly expressed in writing. All data should be considered only for approximation purposes because the data from these sources is gathered from current and previous models. As a result of continual product improvement and modification, the validity of technical data from these sources cannot be guaranteed. It is the responsibility of the customer to ensure in all cases when ordering that technical data is valid and that the specifications meet his/her requirements.

Fischer Panda UK Ltd. 17 Blackmoor Road,
 Ebblake Industrial Estate, Verwood. Dorset BH31 6AX
 Tel: +44 (0)1202 820840 Fax: +44 (0)1202 828688
www.fischerpanda.co.uk