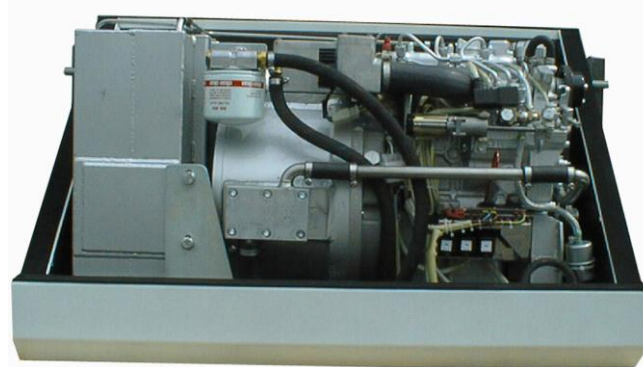




Panda 15 NE PVK – U Specification



Engine:

Type	Kubota – vertical 4-stroke diesel engine type D902
Cylinder	3
Bore / stroke	72 / 73.6 mm
Displacement	898 cm ³
Start system	Electric – 12v

Cooling system: Water-cooled

Alternator:

Type	Fischer Panda
Voltage	231v / 50Hz single phase
Polarity	2 – pole
Nominal Frequency	50 Hz +/- 1.5Hz
Nominal Voltage	231v +/- 3 volt
Nominal Output	12.6 kW / 15.0 kVA
Isolation Class	F
Protection Class	IP 54

Regulation

Voltage regulation by patented VCS system

Cooling: Water-cooled

Dimensions: L1000mm x W540mm x H620mm,

Weight: 340 kgs.

The complete generator is mounted inside a super-silent capsule type MPL – 4DS. Also fitted to the generator as standard is DC charging alternator, engine driven water cooling pump, 2 pole DC wiring and complete 1st and 2nd stage exhaust silencers.

Supplied with the generator would be external mounts, remote AC control / booster box, fuel pump, connecting looms, full instruction manual, and remote control panel giving on/off, start/stop, pre-heat, digital hour meter and all warning indications. The warning indications work on an emergency shut down principle.

A cooling radiator system would also be supplied.(or fitted) The radiator will be fitted with 2 x thermostatically controlled DC fans or a single AC fan and protective cowling. Supplied with the radiator is a power supply, water expansion tank, fan speed controller, temperature sensor and fitting. All our radiator systems are sized to work at ambients of up to + 50 degrees C.

This specification produces a very quiet, reliable generator that is well known in the more demanding commercial applications.