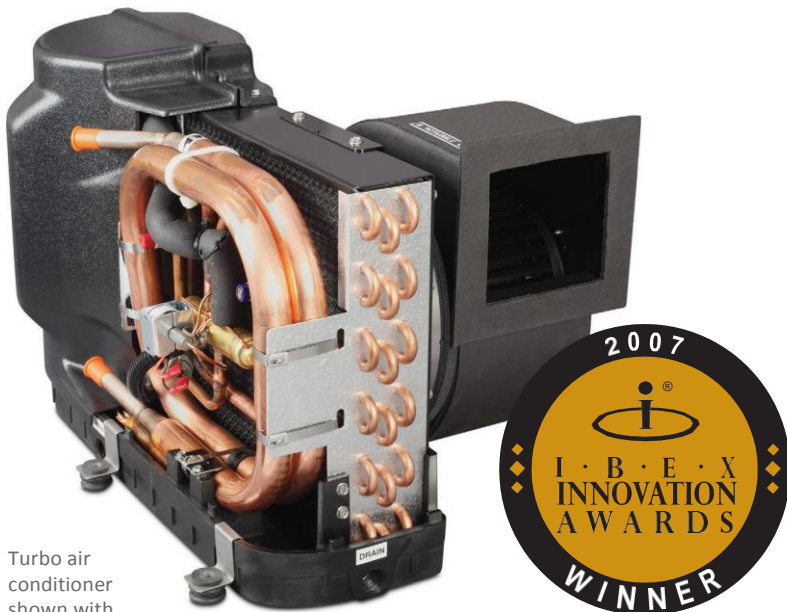


TURBO SERIES AIR CONDITIONING

Powerful, quiet & compact with no drain pan worries



Turbo air conditioner shown with optional sound cover

The Turbo series completely revolutionized self-contained boat air conditioning (cooling and heating) with patented innovations in marine air conditioning system design, winning the IBEX Innovation Award in 2007.

The rust-free molded composite drain pan has three drains for the rapid removal of condensate water. The drain pan has a small footprint for installation flexibility.

A vibration-isolation mounting system results in significantly quieter, virtually vibration-free performance. The enclosed blower motor eliminates overhang for reduced depth.

The Turbo series was specifically engineered to harness and maximize the impressive performance of R-410A, a proven and environmentally safe refrigerant gas.

The optional Turbo sound cover provides up to 50% further noise reduction. This compact, easy-to-install sound cover completely encases the compressor to provide a 3- to 5-dB reduction in noise. Available for all Turbo models, the sound cover installs in minutes. Mounting hardware is included.

KEY BENEFITS

- Up to 27% more energy efficient
- Up to 21% increased capacity
- Compact design uses less space
- Rust-free composite drain pan
- Up to 85% less standing water in the drain pan
- Vibration-isolation mounts reduce noise and vibration
- Engineered to maximize the performance of R-410A, an environmentally safe refrigerant
- Designed from the inside out with multiple patented innovations
- Redesigned composite drain pan is stronger with beefed-up drain threads to resist cracking.
- 5 ft. (1.5 m) air sensor standard
- Operates with selected displays

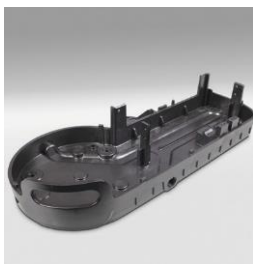
SPECIAL OPTIONS

- Compressor sound cover further reduces noise up to 50%
- Display cable

PRODUCT TESTIMONIAL

"There is very little noise coming from the compressor, and vibrations are practically non-existent. I highly recommend this unit."

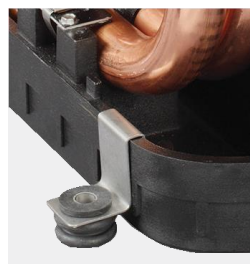
Bob Silverman, boat owner



Redesigned composite drain pan is stronger with beefed-up drain threads to resist cracking.



Optional sound cover further reduces compressor noise by up to 50%.



Vibration-isolation mounting clips reduce vibration and noise.



Fischer Panda UK Limited
17 Blackmoor Road, Ebblake Estate
Verwood, Dorset, BH31 6AX
Tel: 01202 820840 Fax: 01202 828688

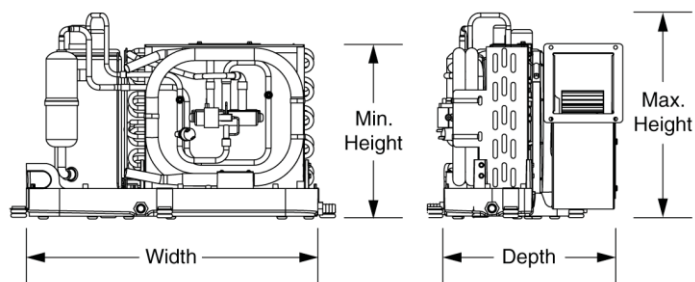
Email: info@fischerpanda.co.uk
www.fischerpanda.co.uk

SELF-CONTAINED AIR CONDITIONING - SPECIFICATIONS

Model ⁽¹⁾	DTU6			DTU8			DTU10			DTU12			DTU16		
Capacity (BTU/h) ⁽²⁾	6000			8000			10000			12000			16000		
Voltage (V)	115	230	240	115	230	240	115	230	240	115	230	240	115	230	240
Cycle (Hz) ⁽³⁾ /Phase (Ph)	60/1		50/1	60/1		50/1	60/1		50/1	60/1		50/1	60/1		50/1
Full Load Amps (FLA) Cool (A)	4.6	2.2	2.7	5.5	3.1	3.2	6.7	3.3	3.2	8.7	4	3.3	10.4	5.1	4.5
Full Load Amps (FLA) Heat (A)	5.9	2.8	3.7	7.1	4	4.1	8.8	3.9	4.3	10.9	5.1	4.3	13.6	6.6	5.9
Full Load Amps (FLA) Blower (A)	0.8	0.36		1.31	0.7	0.83	1.14	0.61	0.48	1.14	0.61	0.48	1.61	0.78	0.56
Locked Rotor Amps (LRA) (A)	36	17.7		36	17.7		42	22	21	58	28	21	62	34	22
Max. Circuit Breaker (A)	15	10		20	10		25	15	10	30	15	10	40	20	15
Min. Circuit Ampacity (A)	12	7	6	13	7		16	10	8	20	11	8	25	12	11
Refrigerant Type	410A			410A			410A			410A			410A		
Min. Height (in/mm) ⁽⁴⁾	10.8/275			10.8/275			12.2/310			12.2/310			12.9/328		
Max. Height (in/mm) ⁽⁴⁾	11.1/282			11.1/282			13/331		12.5/318	12.5/318		13.4/341		13.4/341	
Height w/Opt. Sound Cover (in/mm) ⁽⁴⁾	13.4/341			13.4/341			14/356			14/356			14/356		
Width (in/mm) ⁽⁴⁾	17.6/448			17.6/448			20.4/519			20.4/519			21.4/544		
Max. Depth (in/mm) ⁽⁴⁾	10.7/272			10.7/272			12.4/315			12.4/315			13.3/338		
Min. Supply Duct Size (in/mm)	4/102			5/127			6/153			6/153			7/178		
Min. Supply Air Grille Size (sq in/sq cm)	32/207			48/310			60/388			70/452			80/517		
Min. Return Air Grille Size (sq in/sq cm)	64/413			80/517			100/646			130/839			160/1033		
Seawater Inlet Connection (in/mm)	5/8 /16			5/8 /16			5/8 /16			5/8 /16			5/8 /16		
Net Weight (lbs/kg) ⁽⁵⁾	42.5/19.3	42.5/19.3	42.5/19.3	45.5/20.6	44.5/20.2		47.7/21.7	50.5/23		52/23.6			60/27.3		58.25/26.5
Gross Weight (lbs/kg) ⁽⁵⁾	50.25/22.8	50.25/22.8	50.25/22.8	53.7/24.4	52.75/23.9		57.5/26.1	59.5/27		61/27.7			69.5/31.6		67.75/30.8
Height-Electrical Box (in/mm)	8.8/224			8.8/224			8.8/224			8.8/224			8.8/224		
Width-Electrical Box (in/mm)	6.5/166			6.5/166			6.5/166			6.5/166			6.5/166		
Depth-Electrical Box (in/mm)	2.7/69			2.7/69			2.7/69			2.7/69			2.7/69		

¹To complete the model numbers for a specific voltage/cycle/phase, add a '-1161' for 115V/60Hz/1-Phase, '-2251' for 220-240V/50Hz/1-Phase, and '-2361' for 230V/60Hz/1-Phase, followed by '-410A' (e.g. 'DTU16-2361-410A'). ²BTU and electrical data are based on a 45° F/7.2° C evaporator and 100° F/37.8° C condenser in cool mode, and a 45° F/7.2° C evaporator and 130° F/54.4° C condenser in heat mode. ³60Hz units must not operate at 50Hz and 50Hz units must not operate at 60Hz unless data plate states otherwise. ⁴All dimensions ± 0.30 in. (8 mm). ⁵All weights ± 10%

DIMENSIONS



Fischer Panda UK Limited
 17 Blackmoor Road, Ebblake Estate
 Verwood, Dorset, BH31 6AX
 Tel: 01202 820840 Fax: 01202 828688

Email: info@fischerpanda.co.uk
www.fischerpanda.co.uk

L-2502C Rev. 20160205

Specifications and availability subject to change without notice.

Mobile living made easy.

