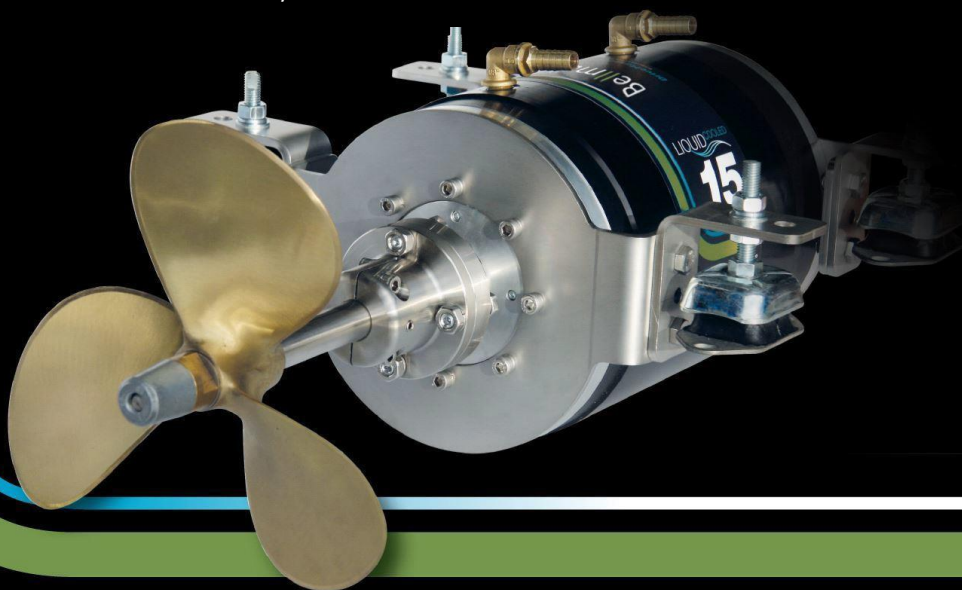


# July 2018

**Bellmarine®**  
Powered by Transfluid



→ e-motion in propulsion!

**TRANSFLUID®**  
industrial & marine

# Index

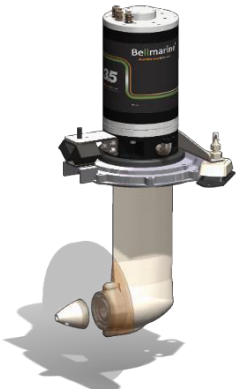
## Product

Product	Page:
Intro	3
DriveMaster Ecoline	4
DriveMaster Cute	5
DriveMaster Ultimate	6
TorqueMaster Pro	8
DriveMaster Modular	9
SailMaster EcoLine	10
SailMaster Ultimate	11
OutboardMaster Pro	12



## Accessories:

Display of your choice	13
Acuity battery monitoring system	15
Cooling system of your choice	16
Bellcontrol Throttle choice	17
Motor / propeller shaft couplings	19
Ecoline propeller shaft system	19
Battery chargers	20
Solar mppt	21
DC-DC converters	21
Inverters 230V 50/60 Hz	22
BowAdjust, proportional Bowthruster controller	23
Lithium Battery	24
System configurator	25



# Bellmarine®

powered by Transfluid



## Electric Boating starts at Bellmarine.

In the world of electric propulsion systems Bellmarine is the standard. The years of experience, quality, innovation and durability are a guarantee for pure boating pleasure!

## Perfection in every detail

All parts installed below decks have to be of the highest quality; moist and salt will take their toll and can have an effect on the durability of your drive system. Only the best materials are suitable and have been carefully selected by Bellmarine.

## E-motion in propulsion!

The Bellmarine systems are being developed and produced in the Netherlands!  
With over 3000 electric propulsion systems in use Bellmarine has set the standard.

You will be assured of the best quality and service, and also the price of a complete system will be a pleasant surprise!



# e-motion in propulsion!

# DriveMaster Ecoline

## Asynchronous, motor and controller **Air-Cooled**

Motor – Air cooled complete closed IP66

Controller Air cooled

**Complete including:** Motor + Controller, integrated thrust bearing, Stainless steel adjustable motor support.

- Motor + controller water resistant IP66
- Additional Power Boost 8 sec.
- IFO Vector Control (superior dynamic response, higher operational efficiency and maximum torque)
- Quick Install / easy connect
- NMEA2000 compatible
- Hybridfunction available
- Incl. Main Switch and Main fuse



Art no:	Description	Motor	V	kW	rpm	Torque	Note
101488	DriveMaster EcoLine 2.0	AC-30	24	2.0	1450	13 Nm	
101489	DriveMaster EcoLine 3.0	AC-30	48	3.0	1450	20 Nm	
101529	DriveMaster EcoLine 6.0	AC-50	48	6.0	1450	40 Nm	



- Every Bellmarine system will be supplied with: Main battery Fuse and Main Switch.



- Display options, throttle choices and more.... you will find on page 13 / 24



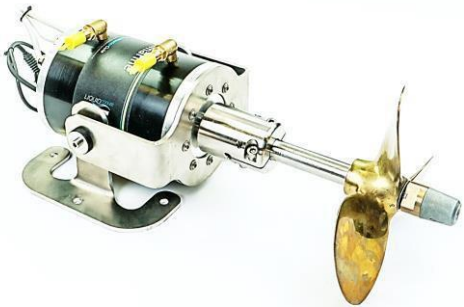
# DriveMaster Cute 1.2 -24V

## Asynchronous, All-In-One Closed loop Cooling system

Motor – Liquid cooled IP66  
Controller Air cooled with integrated heat exchanger

**Complete including:** Motor + Controller, integrated thrust bearing, Stainless steel adjustable motor support and motor / propeller shaft coupler Ø 25 mm

- Motor + controller water resistant (IP66)
- Incl. Closed loop liquid pump
- Additional Power Boost 10sec. 1.5 kW
- IFO Vector Control (superior dynamic response, higher operational efficiency and maximum torque)
- Quick Install / easy connect
- Integrated closed loop cooling system incl. pump
- Quick Install / easy connect / Plug and Play
- NMEA2000 compatible
- Hybrid function available
- Incl. Main Switch and Main fuse



Art no:	Description	Motor	V	kW	rpm	Torque	Note
101528	DriveMaster Cute 1.2	AC-10	24	1,2	1450	9 Nm	

- Every Bellmarine system will be supplied with: Main battery Fuse and Main Switch.



- Display options, throttle choices and more.... you will find on page 13 / 24



# DriveMaster Ultimate 48 / 96Volt

## Asynchronous, Liquid-Cooled

Motor – Liquid cooled complete closed IP66

Controller liquid cooled

**Complete including:** Motor + Controller, integrated thrust bearing, stainless steel motor supports and integrated DC-DC converter for onboard 12V power. (13,8V 300 watt at 48 V / 450 Watt at 96V )

- Motor + controller water resistant (IP66)
- IFO Vector Control (superior dynamic response, higher operational efficiency and maximum torque)
- **Integrated DC-DC converter 48/96V > 13,8 Volt**
- Additional power boost 8 sec.
- Quick Install / easy connect / Plug and Play
- NMEA2000 compatible
- Hybrid function available
- Incl. Main Switch and Main fuse



- Every Bellmarine system will be supplied with: Main Fuse and Main Switch  
96 Volt systems will be supplied with High Voltage Main battery fuse and Main switch



Art no:	Description	Motor	V	kW	rpm	Torque	Note
101607	DriveMaster Ultimate 1.5	AC-10	48	1,5	1450	10 Nm	
101608	DriveMaster Ultimate 3.0	AC-30	48	3.0	1450	20 Nm	
100854	DriveMaster Ultimate 5.0	AC-30	48	5.0	1450	33 Nm	
101609	DriveMaster Ultimate 8.0	AC-50	48	8.0	1450	53 Nm	
100808	DriveMaster Ultimate 10	AC-50	48	10	1450	66 Nm	
100809	DriveMaster Ultimate 15 (S2-30" / S1 12 kW)	AC-50	48	15	1450	92 Nm	
100810	DriveMaster Ultimate 15	AC-60	48	15	1450	99 Nm	
100812	DriveMaster Ultimate 20 (S2-30" / S1 16 kW)	AC-60	96	20	1450	123 Nm	
101610	DriveMaster Ultimate 20	AC-80	48	20	1450	123 Nm	
100811	DriveMaster Ultimate 25	AC-80	96	25	1450	165 Nm	

- Display options, throttle choices and more.... you will find on page 13 / 24





# DriveMaster Ultimate 144Volt

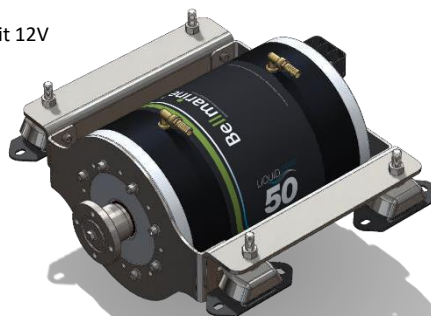
## Asynchronous Liquid-Cooled

Complete including: Motor + stainless steel motor mounting bracket.  
Controller with isolated 12V logic, integrated precharge relays and main power relays, integrated DC-DC converter for Start up and onboard 12V power.

Motor + controller water resistant IP66

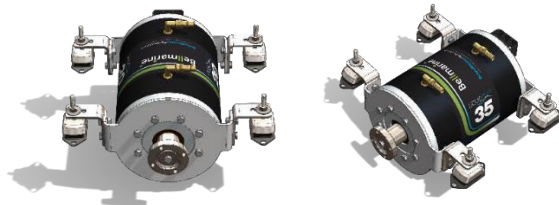
Integrated DC-DC converter 144 > 13.8Volt 450 Watt (start up circuit 12V Logic)

- Motor + controller water resistant (IP66)
- IFO Vector Control (superior dynamic response, higher operational efficiency and maximum torque)
- **Integrated DC-DC converter 144. 13.8V 450 Watt**
- Additional power boost 8 sec.
- Quick Install / easy connect / Plug and Play
- NMEA2000 compatible
- Hybridfunction available
- Incl. Main Switch and Main fuse



Art no:	Description	Motor	V	kW	rpm	Torque	Note
101503	DriveMaster Ultimate 25 (S2-25" / S1 16 kW)	AC-60	144	25	2500	95 Nm	
101288	DriveMaster Ultimate 35 (S2-15" / S1 16 kW )	AC-60	144	35	3500	95 Nm	
101585	DriveMaster Ultimate 25	AC-80	144	25	1450	164 Nm	
101642	DriveMaster Ultimate 35	AC-80-L	144	35	1450	265 Nm	
101580	DriveMaster Ultimate 50 (S2 -15" / S1 35 kW)	AC-80-L	144	50	1850	265 Nm	

- Every Bellmarine system will be delivered complete with High Voltage Main fuse and Main battery switch.



- Display options, throttle choices and more.... you will find on page 13 / 24



# TorqueMaster Pro

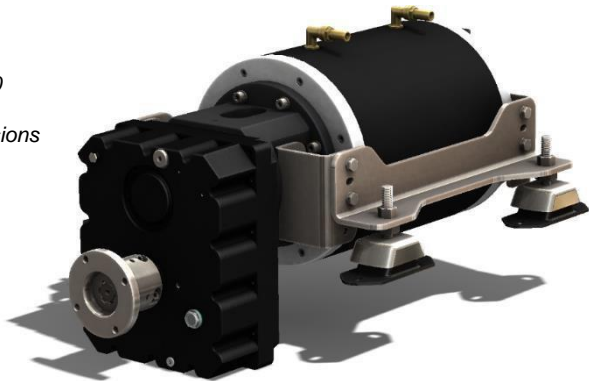


Geared propeller shaft systems Liquid Cooled

- 25 kW / 30 kW / 40kW



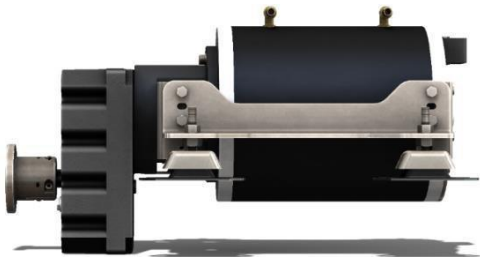
- Propeller rpm 800 / 950
- Extreme high torque
- 48 / 96 or 144 Volt versions
- Liquid cooled
- Quiet and durable



## Specifications:

Art no:	Description	Motor	V	kW	rpm	Torque	Note
101716	TorqueMaster Pro 25	AC-80	96	25	800	299 Nm	
101717	TorqueMaster Pro 30	AC-80	144	30	800	358 Nm	
101718	TorqueMaster Pro 40	AC-80-L	144	40	950	402 Nm	

• Display options, throttle choices and more.... you will find on page 13 / 24



•Prices in Euro excl VAT, exworks Gouda Netherlands  
•Prices subject to change and could be different in foreign countries



# DriveMaster Modular 48 / 96 / 144Volt

## Asynchronous Liquid-Cooled

Motor – Liquid cooled complete closed IP66

Controller liquid cooled

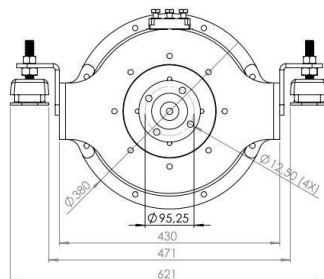
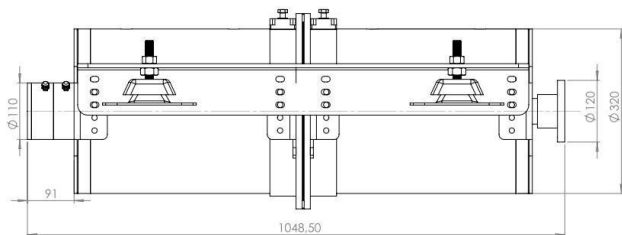
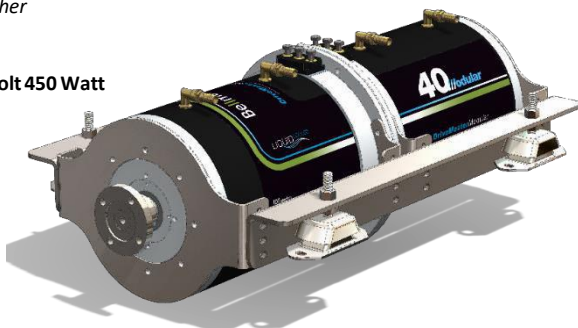
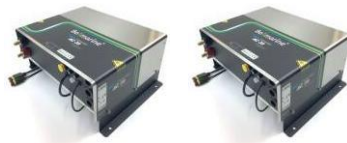
**Modular drive system Complete including:** 2 x Motor + 2 x Controller, rotation sensor IP68 and temp sensor.

Including stainless steel motor mounting Brackett

Controller and motor in Master / Slave configuration.

Integrated DC-DC converter 144 > 13.8Volt 450 Watt (start up circuit 12V Logic)

- Motor + 2x controller water resistant (IP66)
- IFO Vector Control (superior dynamic response, higher operational efficiency and maximum torque)
- Additional power Boost 8 sec.
- **Integrated DC-DC converter 48 / 96 / 144 > 13.8Volt 450 Watt** (start up circuit 12V Logic 144 V versions)
- Quick Install / easy connect / Plug and Play
- NMEA2000 compatible
- Hybrid function available
- Incl. 2x Main Switch and 2x Main fuse



Art no:	Description	Motor	V	kW	rpm	Torque	Note
101647	DriveMaster Modular 40 *30 kW continuously—limited by controller	N80-2	48	30 / 40	1550	246 Nm	
101485	DriveMaster Modular 40	N80-2	96	40	1550	246 Nm	
101478	DriveMaster Modular 50	N80-2	144	50	1450	264 Nm	

• Every Bellmarine Modular system will be delivered complete with 2x High Voltage Main battery fuse and Main switch.

• Display options, throttle choices and more.... you will find on page 13 / 24



- Prices in Euro excl VAT, exworks Gouda Netherlands
- Prices subject to change and could be different in foreign countries

# SailMaster Ecoline 48Volt

## Asynchronous Air-Cooled

Motor – Air cooled complete closed IP66  
Controller Air cooled

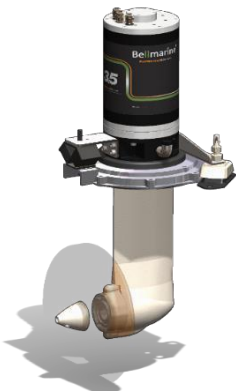
**Complete including:** Motor + Controller, Yanmar SD25 Sail drive leg with 2:1 reduction, stainless steel motor support brackets.  
Motor Complete closed IP66 and maintenance free, the plug and play motor controller is Air-cooled.

- Motor + controller water resistant (IP66)
- IFO Vector Control (superior dynamic response, higher operational efficiency and maximum torque)
- Additional power Boost 8 sec.
- Oil level Spyglass
- Oil refill inlet
- Quick Install/ easy connect
- NMEA2000 compatible
- Hybrid function available
- Suitable to use with Fixed or folding propellers
- Incl. Main Switch and Main fuse



Art no:	Description	Motor	V	kW	rpm	Note
101492	SailMaster Ecoline 3.5	AC-30	48	3.5	690	
101611	SailMaster Ecoline 6.0	AC-50-S	48	6.0	690	

- Supplied without propeller.
- Every Bellmarine system will be delivered with, battery Main Fuse and MainSwitch.
- Display options, throttle choices and more.... you will find on page 13 / 24



•Prices in Euro excl VAT, exworks Gouda Netherlands  
•Prices subject to change and could be different in foreign countries

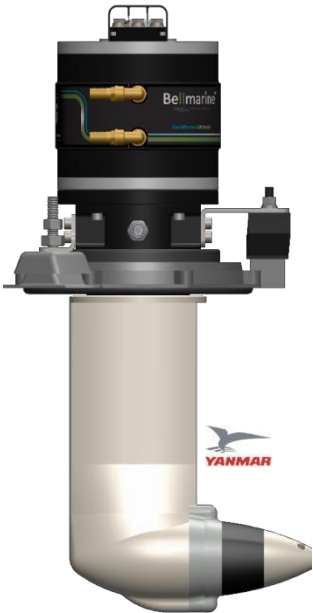
# SailMaster Ultimate 48 / 96V

## Asynchronous Liquid-Cooled

Motor – Liquid cooled complete closed IP66  
Controller liquid cooled

**Complete including:** Motor + Controller, Yanmar SD25 Sail drive leg with 2:1 reduction, stainless steel motor support brackets.  
The SailMaster Ultimate versions are standard equipped with an integrated DC-DC converter in the motor controller, to provide you with 12Volt DC onboard power.

- Motor + controller water resistant (IP66)
- IFO Vector Control (superior dynamic response, higher operational efficiency and maximum torque)
- Additional Power Boost 8 sec.
- Compact and Ultra Compact dimensions 7.5 / 10 kW
- Oil level Spyglass
- Oil refill inlet
- **Integrated DC-DC converter**
- Quick Install/ easy connect
- NMEA2000 compatible
- Hybrid / regeneration function available
- Suitable to use with Fixed or folding propellers
- Incl. Main Switch and Main fuse



Art no:	Description	Motor	V	kW	rpm	Note
Liquid Cooled						
100882	SailMaster Ultimate 5.0 compact	AC-50-S	48	5	1200	
101474	SailMaster Ultimate 10	AC-50-S	48	10	1200	
101475	SailMaster Ultimate 15	AC-50	48	15	750	
101476	SailMaster Ultimate 20	AC-50	96	20	1300	

- Supplied without propeller.
- Every Bellmarine system will be delivered with, battery Main Fuse and Main Switch.  
96 Volt systems will be supplied with High Voltage Main fuse and Main switch set
- Display options, throttle choices and more.... you will find on page 13 / 24



•Prices in Euro excl VAT, exworks Gouda Netherlands  
•Prices subject to change and could be different in foreign countries

OutboardMaster Pro

Asynchronous Air-Cooled or Liquid-Cooled

Motor – Liquid cooled complete closed IP66

Controller liquid cooled

Specially developed electric outboard for applications where maneuverability and robustness is crucial.

Supplied Complete Including; Electric Motor + Yanmar Sail drive leg with gear reduction of 2:1, Motor Controller, stainless steel mounting brackets and tiller arm (for use with hydraulic steering system).

- Supplied without propeller.

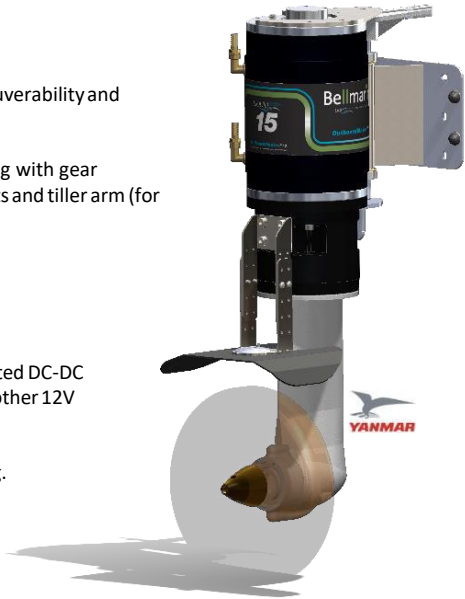
The OutboardMaster will be available in two versions:

- Ecoline - AirCooled
- Ultimate - Liquid Cooled

The Liquid cooled Outboard Master Pro version will have an integrated DC-DC converter integrated in the motor controller for cooling pump and other 12V equipment.

Complete including: Motor + Controller, integrated thrust bearing.

- Motor + controller water resistant (IP66)
- IFO Vector Control (superior dynamic response, higher operational efficiency and maximum torque)
- Additional Power Boost 8 sec.
- Integrated DC-DC converter > Ultimate versions
- Quick Install / easy connect
- NMEA2000 compatible
- Incl. Main Switch and Main fuse



Art no:	Description	Motor	V	kW	rpm	Note
Air-Cooled						
101500	OutboardMaster Pro Ecoline 6	AC-50	48	6	750	
Art no:	Description	Motor	V	kW	rpm	Note
Liquid-Cooled						
101469	OutboardMaster Pro Ultimate 10	AC-50	48	10	750	
101470	OutboardMaster Pro Ultimate 15	AC-50	48	15	750	
101471	OutboardMaster Pro Ultimate 20	AC-50	96	20	1250	
Optional						
101472	Anti ventilation / cavitation plate (Stainless steel, incl. anode)					

- Supplied without propeller.
- Display options, throttle choices and more.... you will find on page 13 / 24
- Every Bellmarine system will be delivered with, battery Main Fuse and Main Switch. 96 Volt systems will be supplied with High Voltage Main fuse and Main switch set



•Prices in Euro excl VAT, exworks Gouda Netherlands

•Prices subject to change and could be different in foreign countries

# Accessories

## Multifunctional Displays: Bell- (Ray)marine NMEA2000

Bellmarine designed hard- and software which easily combine with the powerful range of nautical products of Raymarine.

The Axiom Multifunction displays deliver the speed and simplicity of the Lighthouse III user interface, which ensures smooth operation of the touchscreen.

Now it is possible to integrate your electric propulsion 1 or 2 Bellmarine motor system information into your complete boat system and have everything on one well-arranged screen. Including GPS speedometer and chart plotter.

By the standard integrated Wi-Fi function, you will always have an extra screen on your Tablet or Smartphone.



### Raymarine display – Axiom 7 & 9

Your system will be supplied complete with special motor controller software.

The display of your choice will be supplied complete with the Actisense complete NMEA 2000® backbone in a single device and will be pre assembled in the Bellmarine monitoring and control cable set.

- Every display / cable set will be supplied complete with the Actisense, Contact key
- The standard length of the cable set = 5 meter.
- Longer cables on request, see page 15



- Actisense NMEA2000 **A2K-SBN 4**  
WAY SMALL BOAT NETWORK

Art no:	Model	Description	Note
101516	<b>Axiom 7 Bellmarine</b> Incl. Nautical map	7" Multi functional Display incl. integrated Wi-Fi Incl. Navionics Small download Chart & A2K-SBN4	
101517	<b>Axiom 9 Bellmarine</b> Incl. Nautical map	9" Multi functional Display incl. integrated Wi-Fi Incl. Navionics Small download Chart & A2K-SBN4	
101583	<b>Flush mount Cover-7</b>	Axiom 7 sun cover	
101623	<b>Flush mount cover-9</b>	Axiom 9 sun cover	

### Axiom Key Features



AFMETINGEN					
	AXIOM 7		AXIOM 9		AXIOM 12
	mm	inch	mm	inch	mm
A	250,4	9,86	265,03	10,43	314
B	133	5,24	152,08	6,21	217
C	162,5	6,4	182,8	7,39	226,8
D	76,4	3,0	74,9	2,96	79,3
E	218	8,59	177	6,97	183

- Prices in Euro excl VAT, exworks Gouda Netherlands
- Prices subject to change and could be different in foreign countries

## Accessories

### Display's

For every DriveMaster and SailMaster system a display and cable set is needed for monitoring and control of the controller. The display options range from a simple E2 LCD display to our Multi functional display's



E2



E4



E7

Display	Description
E2	Simple round display with battery status indication and motor rpm
E4	Monochrome display with battery status indication, motor power, motor rpm, mode selection and Eco meter
E7	Colour display with battery status indication, motor power, motor rpm, motor temperature, controller temperature, eco meter, battery amps, battery voltage and mode selection. With Acuity also detailed and historic battery information is visible.

### Display's

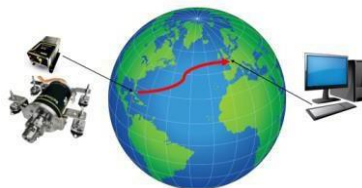
Complete set including: Cable set length 5 meter moulded 12 pin connector with gold plated contacts, including 3 position contact key.

Art no:	Description		Note
100831	E2-Mini LCD	Incl. cable set for monitoring and control, Ø51mm	
100794	E4-LCD	Incl. cable set for monitoring and control	
100795	E7- Full color	Incl. cable set for monitoring and control	
	Extra Cable length +5m <sup>1</sup>	Optional: Cable set Total length 10 meter	
	Extra Cable length +10m <sup>1</sup>	Optional: Cable set Total length 15 meter	
	Extra Cable length +15m <sup>1</sup>	Optional: Cable set Total length 20 meter	

### Hybrid / regeneration function

Hybrid hard and software of Drivemaster Ultimate and Ecoline systems  
Ideal for building a parallel hybrid system or recharge your batteries during sailing.

Art no:	Description	Note
101527	<b>Hybrid - parallel hybrid function</b> <i>(In combination with diesel engine)</i> Incl. Custom cable set and hybrid motorcontroller setup	
101640	<b>Hybrid - Regeneration / during sailing</b> Incl. Custom cable set and hybrid motorcontroller setup	
100332	<b>Help and Configuration on Distance interface: Diagnose or configure your Bellmarine system on distance:</b> USB / PLC interface OEM 1314k-4401 v4.3.3 pc progr. Station.	



\*Prices in Euro excl VAT, exworks Gouda Netherlands  
\*Prices subject to change and could be different in foreign countries



## Accessories

### ACUITY - Battery condition monitoring system

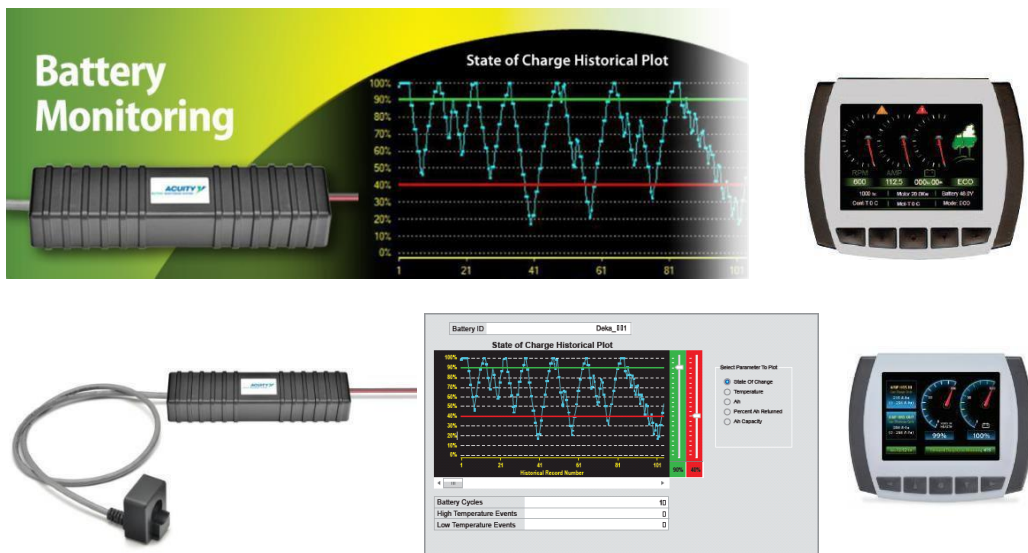
All our Ultimate and Ecoline propulsion systems can be enhanced with a “state of art” battery condition monitoring system.

ACUITY constantly measures and logs the precise condition of your battery. This detailed information will be displayed on your display, including the multifunctional displays from Raymarine.

With a E7 display it's even possible to display the historic discharge and charge information on different screens. Also the historic data can be downloaded to a PC with a USB interface.

With the special Acuity E2 display all the battery data can be made visible without turning on your propulsion system.

- Not available on DriveMaster Classic series



### Acuity accurate battery management

Art no:	Model		Note
101466	Acuity 24–48 VDC	Standalone Unit	
101542	Acuity 72–144 VDC	Standalone Unit	
101559	Acuity USB Interface + Software	Configuration and monitoring PLC software and interface	
101613	E2- Acuity Display	Always- On Display, Ø52 mm. Displays the following data in a loop: Battery Voltage / Current / Temp / Total Discharged / Total Charged / Capacity in %	

•Prices in Euro excl VAT, exworks Gouda Netherlands

•Prices subject to change and could be different in foreign countries

## Accessories

### Liquid Cooling

Water cooling accessories for all Ultimate systems.

Dependent on the location of sailing there are two version of water cooling the motor and controller. The controller and motor are not salt water resistant, so when there is a possibility you will be sailing in salt water we advise you to choose for the closed loop cooling system instead of cooling with external water.



### Cooling: Fresh water

Art no:	Description	Note
100798	Self priming pump	Incl. hose barbs and system connector
100799	Install / Connection kit	Incl: 2 x hull fittings, 1 x ball valve, bronze water strainer, 5 meters hose, hose barbs and SS hose clamps.

### Cooling: Salt water

Art no:	Description	Size	Power Advise	Note
101446	Cooling System with heat exchanger	S	Up to 5kW	
101447		M	5-10kW	
101448		L	15-20 kW	
101449		XL	20+ kW	

### Cooling: Closed loop

Art no:	Description	Note
101531	Circulation pump	Circulation pump 12V 1.9A 16mm 20l/min Brushless DC, extra heavy-duty construction Motors designed for continuous operation Connection between motor and pump part magnetically driven.
	Expansion vessel	1,5 Liter, Incl. Stainless steel mounting bracket



•Prices in Euro excl VAT, exworks Gouda Netherlands  
•Prices subject to change and could be different in foreign countries

# Accessories

## Bellcontrol Throttle

- Water resistant(IP67)
- Electronic Hall-sensor technology 0-5 Volt.

### Maneuvering in Style...

#### Side mounting

Art no:	Description	Type	Side Mount	Note
101422	Bellcontrol Casual	C01	Black delrin with stainless handle, side mount, IP66 b (contactless hall effect sensor, 0-5V output)	
101551	Bellcontrol Tangle free	C02	Black delrin with Black delrin knop, side mount, IP66 (contactless hall effect sensor, 0-5V output)	
101630	Bellcontrol Tangle free	C03	Stainless Steel Version, side mount, IP66 (contactless hall effect sensor, 0-5V output) tangle free.	
101423	Bellcontrol Casual – SS	S11	Stainless Steel Version, side mount, IP66 (contactless hall effect sensor, 0-5V output)	
101424	Bellcontrol Sport	S12	Black delrin / sport version, side mount, IP66 (contactless hall effect sensor, 0-5V output)	
101425	Bellcontrol Sport – SS	S13	Stainless Steel / Sport version, side mount, IP66 (contactless hall effect sensor, 0-5V output)	
			<b>Control Master Replacements</b>	
101426	Bellcontrol	C00	Black delrin with stainless handle, side mount, IP66 (contactless hall effect sensor, 0-5V output) <b>Special replacement for Control Master casual</b>	
101427	Bellcontrol	S00	Black delrin / sport version, side mount, IP66 (contactless hall effect sensor, 0-5V output) <b>Special replacement for Control Master Sport</b>	



C01



S11



C03



C02



S12



S13

## Accessories:

### Bellcontrol Throttle

- Water resistant (IP67)
- Electronic Hall-sensor technology 0-5 Volt



#### Maneuvering in Style ...

#### Top mounting single

Art no:	Description	Type	Top Mount	Note
101428	Bellcontrol Casual	TC1-01	Black delrin with Stainless handle, top mount, IP66 (contactless hall effect sensor, 0-5V output)	
101429	Bellcontrol Casual - SS	TC1-11	Stainless Steel Version with black delrin base, top mount, IP66 (contactless hall effect sensor, 0-5V output)	
101430	Bellcontrol Casual-Sport	TC1-12	Black Delrin / sport version, top mount, IP66 (contactless hall effect sensor, 0-5V output)	
101431	Bellcontrol Sport - SS	TC1-13	Stainless Steel / Sport version with black delrin base, top mount, IP66 (contactless hall effect sensor, 0-5V output)	



#### Maneuvering in Style ...

#### Top mounting dual

Art no:	Description	Type	Top Mount – Dual Control	Note
101432	Bellcontrol Casual	TC2-01	Black Delrin with Stainless handles, dual joystick top mount, IP66 (contactless hall effect sensor, 2x 0-5V output)	
101433	Bellcontrol Casual - SS	TC2-11	Stainless Steel Version with black Delrin base, dual joystick top mount, IP66 (contactless hall effect sensor, 2x 0-5V output)	
101434	Bellcontrol Casual-Sport	TC2-12	Black Delrin / sport version, dual joystick top mount, IP66 (contactless hall effect sensor, 2x 0-5V output)	
101435	Bellcontrol Sport – SS	TC2-13	Stainless Steel / Sport version with black Delrin base, dual joystick top mount, IP66 (contactless hall effect sensor, 2x 0-5V output)	

## Transfluid Control Lever



Art no:	Description	Type	Top Mount	Note
	Single station for single engine	TC1-01	Stainless handle, top mount, IP66 (0-5V output – 4-20 mA – push pull cable)	
	Single station for twin engine	TC1-11	Stainless handle, top mount, IP66 (0-5V output – 4-20 mA – push pull cable)	
	Double station for single engine	TC1-12	Stainless handle, top mount, IP66 (0-5V output – 4-20 mA – push pull cable)	
	Double station for twin engine	TC1-13	Stainless handle, top mount, IP66 (0-5V output – 4-20 mA – push pull cable)	

## Accessories

### Propeller shaft

#### Motor – Propeller Shaft Couplings

Art no:	Description		Note
101219	Motor - Shaft Clamping Coupler <b>Ø 25 mm</b>	To use in combination with Propeller shaft Ø 25 mm. (produced in Stainless Steel)	
101220	Motor - Shaft Clamping Coupler <b>Ø 30 mm</b>	To use in combination with Propeller shaft Ø 30 mm. (produced in Stainless Steel)	

#### Ecoline Propeller Shaft system for electric propulsion\*

Art no:	Description	Up to Max 8 kW Motor Power	Note
100427	Ecoline system 1.5	Shaft Ø 25 mm. Length 1,5 meter (can be shortened) produced in Stainless Steel 316 Including, special low friction water lubricated shaft bearings	

- Ecoline Shafts systems are supplied excluding Ø 25 mm motor / shaft clamping coupler and propeller,

## Battery Chargers

### AXIgo & Flexis Battery chargers

The perfect charger for all battery banks.

The AxiGo charger has a special shore power selection switch to adjust for the available current of the shore power connection. There can be chosen between 16, 10 or 6A, this will make sure the battery can always be charged.

The Flexis chargers are fully programmable via USB so every type of Lead and Lithium battery can be fully charged.

- Remote Status led connections
- Remote Stop charge connection
- Battery room ventilation control



Art no:	Type	Batt Voltage	Charge Current	AC Voltage	AC Current	Case	Note
100730	AXIgo 48E60	48V	60A	230V	16/10/6* A	M**	
101624	Flexis 48D100	48V	100A	3 x 400V	10A	FF130	
101625	Flexis 48D150	48V	150A	3 x 400V	16A	FF130	
101626	Flexis 48D200	48V	200A	3 x 400V	20A	FF250	
101145	Flexis 80E25	96V	25A	230V	16A	FF130	
101514	Flexis 80E50	96V	50A	3 x 400V	10A	FF130	
101627	Flexis 80D100	96V	100A	3 x 400V	20A	FF250	
101481	Flexis 80D150	96V	150A	3 x 400V	32A	FF330	
101628	Flexis 80D200	96V	200A	3 x 400V	40A	FF550	
101631	Flexis 144D100	144V	100A	3 x 400V	32A	FF250	
101605	Flexis 144D150	144V	150A	3 x 400V	48A	FF330	
101505	Flexis 144D200	144V	200A	3 x 400V	64A	FF550	

- Adjusted with selection switch, battery charge current will be adjusted accordingly
- Other models, specifications and prices on request
- IP54 Case possible for Flexis series on request (IP20)



# COOLMAX SR MAXIMIZER

## Solar MPPT

The COOLMAX SR is a high efficiency, buck only, common positive Maximum Power Point Tracker (MPPT). It is the latest development in the MAXIMIZER range, which was pioneered by AERL in 1985. The COOLMAX SR blends the famously reliable AERL power stage with easy to use digital features such as system performance logging, fully configurable alarms and remote system monitoring and control. The COOLMAX SR employs a maximum power point tracking strategy which has been proven to be highly robust, resistant to local extremes, and results in power losses of less than 0.5% over the whole operating temperature range of a PV Array.

Some of the device's main features and benefits include:

- Increase PV output by up to 35%
- Super high peak efficiencies > 99%
- Greater power advantage and MPPT response
- Common positive wiring configuration
- Advanced colour touch screen LCD display
- Modbus and USB communications
- High power density — 1kW/l & 1.5kW/kg



Art no:	Type	Nominal Batt Voltage	Charge Current	Power	Efficiency	Note
101490	Coolmax SR 48/96	48-96V	45A	4500W	98,5%	
101491	Coolmax SR 144	144V	45A	4500W	98,5%	

## DC-DC converters

### All systems

#### Features

Isolated Switching Regulator:

Output power 300W / 450W max.

Encapsulated IP65

Vibration resistant

Short circuit protection

Connector Molex-Mini-FitSr. 42816 Over temperature protected

Compact design

On / Off Key switch input

Wide input range

Contact Cooling



Art no:	Description	Nominal Batt Voltage	Voltage Out	Power	Note
100659	DC4812300	36/48V	13,8V	300W	
101632	DC4824300	36/48V	26V	300W	
100494	DC4812450	36/48V	13,8V	450W	
101633	DC9612450	96V	13,8V	450W	
101318	DC9624450	96V	26V	450W	
101634	DC4824450	36/48V	26V	450W	
101635	DC14412450	144V	13,8V	450W	
101636	DC14424450	144V	26V	450W	

# Inverter 230Volt

## Pure sinwave inverter 3500W

Pure sinewave output provides the ideal power source for modern electronics.

Short-circuit proof robust design that protects itself against AC shorts. Sophisticated circuitry provides protection against overload, short circuit and over temperature. Adjustable under volts detection also protects the battery against excessive discharge.

Auto-start circuitry automatically switches the inverter ON and OFF with applied appliances. The auto-start is an important feature as it maximizes valuable battery capacity. Sensitivity of the auto-start can be easily adjusted to either start small appliances or run continuously.



Some of the device’s main features and benefits include:

- **Ruggedisation**  
Enhanced inverter protection to withstand high vibration and movement. A must-have for all mobile and marine applications.
- **RCD Protection**  
Fit an RCD (Residual Current Device) to the inverter to protect the end users from dangerous appliance faults. An extra level of safety important in mobile applications and emergency services.

• **Internal Automatic Transfer Switch (optional)**

Allows the inverter to be connected to a secondary power source (eg. Generator, Grid); and automatically switch the output between the inverter and secondary power source accordingly.

- **Peak Efficiency 94%**

Art no:	Type	Nominal Batt Voltage	Continuous Power	Surge 5 sec	½ hr Rating	Note
101511	LS-3596	96V	3500W	10.000W	4100W	
101639	LS-35125	144V	3500W	3500W	4100W	

# BowAdjust Control

## Universal Proportional Bow Thruster Motor Controller

Bow Adjust Control is a universal Proportional motor controller for every type Bow thruster, it gives you the perfect control of your boat.  
Also perfect for any 48V propulsion system since no additional battery bank and charger is needed.

**Complete including.:** 1x Control panel B01 + cable and connection materials



Art no:	Descriptie		P-Max 12V	P-Max 24V	Note
100855	BowAdjust 12/24V 375A	BowAdjust motor controller. In 48V > 12V Out- 12 or 24 Volt 375A	4,5kW	9,0kW	
100856	BowAdjust 12/24V 750A	BowAdjust motor controller. In 48V > 12V Out- 12 or 24 Volt 750A	9,0kW	18,0 kW	

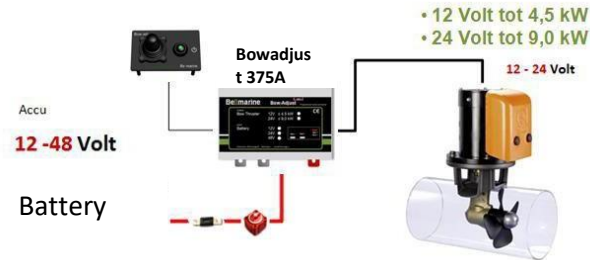
• If 2 controllers are ordered (Bow and Stern) a dual control panel can be supplied.



### Additional Control Panels

- Each Panel is supplied with 10 meters connection cable

Art no:	Description	Type		Note
101553	Additional Control Panel	B-01	Single Control Panel for controlling a bow thruster from an additional location standard version (180 degrees adjustment)	
101554	Additional Control Panel	B-02	Single Control Panel for controlling a bow thruster from an additional location finger tip version	
101067	Additional Dual Control Panel	C-20	Dual Control panel for controlling a Bow and Stern thruster from a additional location	
101068	Switch Box Double control		Automatic Switch Box to switch between the 2 control panels. Including 10 meters connection cables.	



## Battery LiFePO4

It is based on lithium iron phosphate cells (LiFePO4), a technology that is safe and has the best performance/cost ratio, with integrated BMS to maintain the cells always equalized and efficient. Box is stainless steel IP67.

### Long lifespan

- More than 3000 cycles

The lifespan is 3 times longer than traditional batteries, making the cost per cycle lower. Maintenance-free  
Planned service is avoided, having no need of topping up or periodical checks. The conditions of the battery can be easily verified thanks to integrated diagnosis systems. No gas emissions during charge and discharge, so no special charging rooms are required. They may be charged at any place with maximum safety.

### Suited for every application

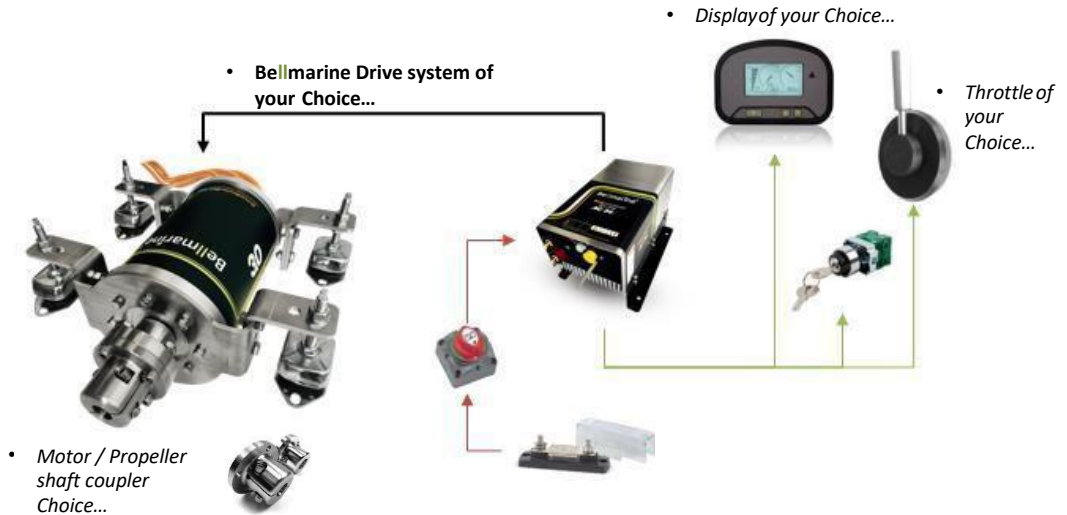
Having no gas emissions, these batteries are suited also for marine and many industrial applications.

Art. No.:	Nominal Voltage V dc	Capacity Ah	Energy kWh	Appr. Weight kg
KBP0510100	51,3	100	5,1	62
KBP0510200	51,3	200	10,2	125
KBP0510300	51,3	300	15,3	185
KBP5100400	51,3	400	20,5	246
KBP5100600	51,3	600	30,7	370
KBP0510800	51,3	800	41,0	492

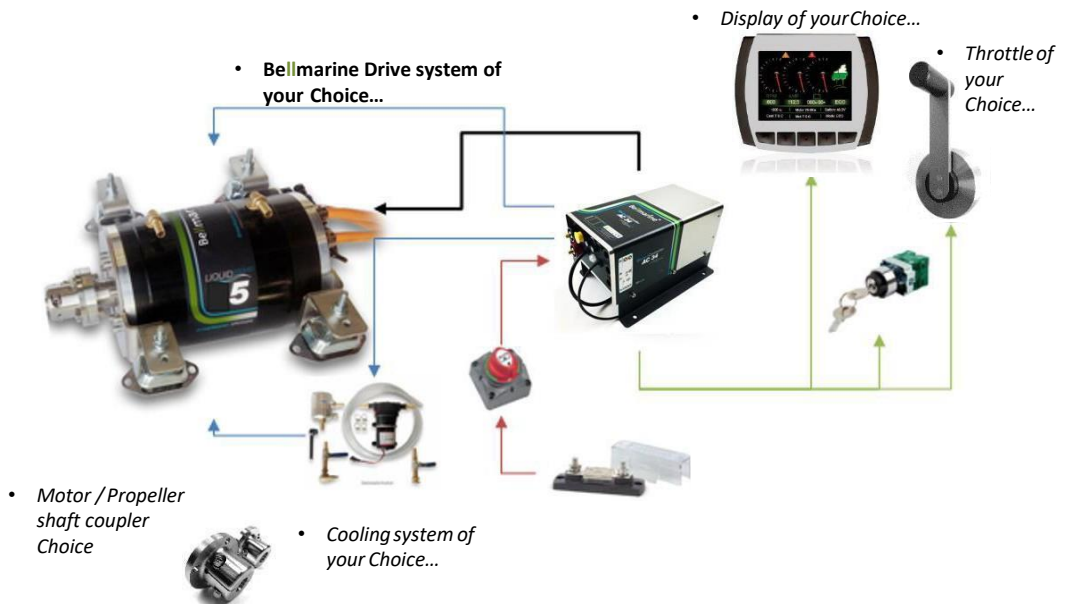
Art. No.:	Nominal Voltage V dc	Capacity Ah	Energy kWh	Appr. Weight kg
KBP0960100	96	100	9,6	105
KBP0960200	96	200	19,2	215
KBP0960300	96	300	28,8	320
KBP0960400	96	400	38,4	425
KBP0960600	96	600	57,6	635
KBP0960800	96	800	76,8	845

Art. No.:	Nominal Voltage V dc	Capacity Ah	Energy kWh	Appr. Weight kg
KBP0063015	153,6	100	15,3	155
KBP0063016	153,6	200	30,7	310
KBS0063001	153,6	300	46,0	460
KBS0063002	153,6	400	61,4	615
KBS0063003	153,6	600	92,1	920
KBS0063004	153,6	800	122,8	1230

# Example System Air-cooled:



# Example System Liquid-cooled:



# Bellmarine®

powered by Transfluid

e-motion in propulsion

Bellmarine  
Meridian 29  
NL-2501DA Gouda  
The Netherlands

T +31 (0) 25 4868330  
E [info@bellmarine.nl](mailto:info@bellmarine.nl)  
I [www.bellmarine.nl](http://www.bellmarine.nl)

Bellmarine®

Powered by:

**Fischer Panda UK Ltd**

17 Blackmoor Road, Ebblake Estate  
Verwood, Dorset. BH31 6AX  
Tel: 01202 820840 Fax: 01202 828688  
Email: [info@fischerpanda.co.uk](mailto:info@fischerpanda.co.uk)  
Website: [www.fischerpanda.co.uk](http://www.fischerpanda.co.uk)



Bellmarine is an authorized Transfluid® distributor in the Netherlands and is a member of the Transfluid® network of authorized distributors in Europe.

## Electric Boating starts at Bellmarine



**TRANSFLUID®**  
industrial & marine