



Category | Large to Mega Yachts (over 80 ft / 24 m)

AQUA MATIC XL

More water, more time at sea

Production: 2200 - 3400 Gallons/day (8328 - 12870 Lit/day)

Get industrial-powered water production without the need for extra maintenance or more space. With its unique one-touch operation and optional remote control, the Aqua Matic XL eliminates the need for an engine room operator. It is adequate for all boats, yachts, and unattended continual land-based operations that need significant water supply. The Aqua Matic XL delivers limitless water production with the convenience of fully automatic operation in a small, compact design.

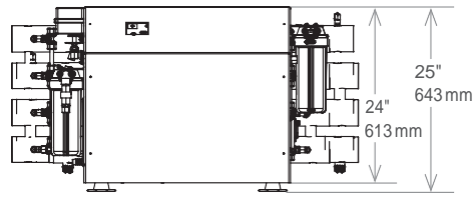


Aqua Matic XL - Key Features

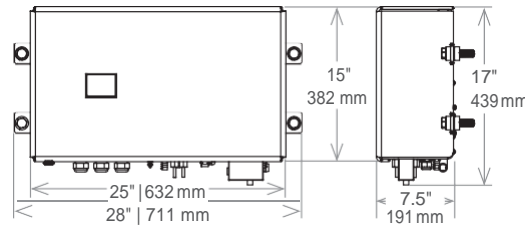
- NMEA 2000 compliant
- Full color touch screen
- One touch operation
- Unique production range with fully automatic operation

Dimensions - Aqua Matic XL * Other voltage available upon request

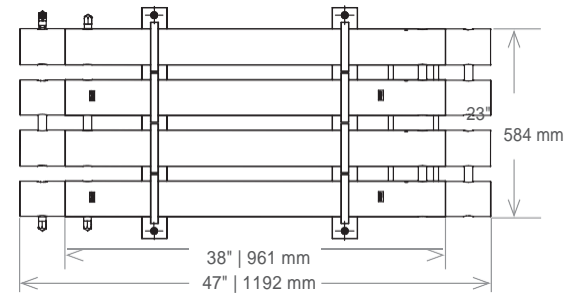
Compact - Front



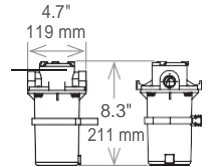
Modular - Control Panel



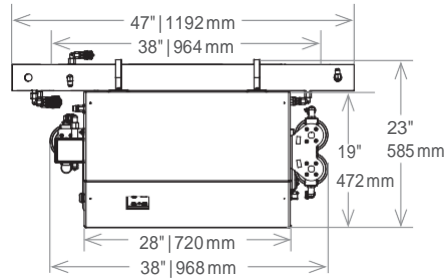
Membrane Assembly



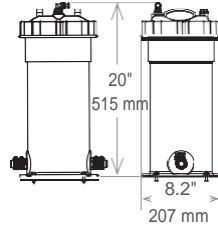
Sea Strainer



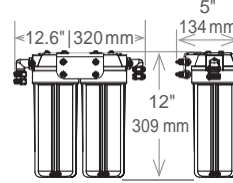
Compact - Topview



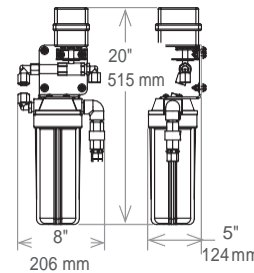
Pre-Filter Assembly



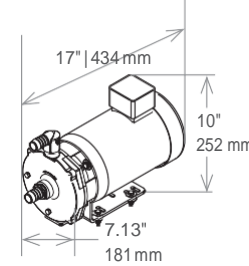
Dual Post-Filter



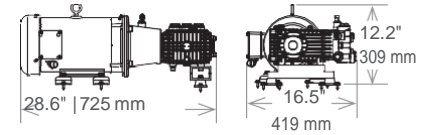
Fresh Water Flush



Booster Pump



High Pressure Pump



Specifications - Aqua Matic XL

Model #	Production/hr.	Production/24hrs.	Weight - Compact*	Weight - Modular*
2200	92 Gal / 347 L	2200 Gal / 8328 L	413 lbs / 187 kg	390 lbs / 176 kg
2600	108 Gal / 410 L	2600 Gal / 9842 L	413 lbs / 187 kg	400 lbs / 181 kg

Model #	Production/hr.	Production/24hrs.	Weight - Compact*	Weight - Modular*
2800	117 Gal / 442 L	2800 Gal / 10599 L	428 lbs / 194 kg	415 lbs / 188 kg
3400	142 Gal / 536 L	3400 Gal / 12870 L	439 lbs / 199 kg	432 lbs / 196 kg

ELECTRICAL

Phase	Pump Motor	Voltage VAC	Hz	Normal Operating Amps	Start Up Current
Three	High Pressure / Booster	190 / 380	50	5.2 / 2.6	26 / 23
Three	High Pressure / Booster	208 / 230 / 460	60	6 / 5.8 / 2.9	30 / 27 / 23
Single	High Pressure / Booster	220 / 230	50 / 60	32 / 26.5	128 / 108

Circuit Breaker Amp Rating	HP	AC Voltage	Hz	Phase	Normal Operating Amps	Circuit Breaker Amp
2200 - 3400 GPD	5	190 / 380	50	3	15.6 / 7.8	80/60
2200 - 3400 GPD	5	208 / 230 / 460	60	3	13.9 / 13.4 / 6.7	80/60
2200 - 2600 GPD	5	220 / 230	50 / 60	1	220 / 230	50/40

HP = Horse Power

For further information please contact:



Fischer Panda UK Limited
 17 Blackmoor Road, Ebblake Estate
 Verwood, Dorset, BH31 6AX
 Tel: 01202 820840 Fax: 01202 828688
 Email: info@fischerpanda.co.uk
www.fischerpanda.co.uk