



## Generator Panda 10000 PSC – Specifications



### *General Technical Data*

Model	<b>Panda 10000 PSC</b>
Generator Type	<b>Premium Line</b> <b>Panda Standard Asynchronous (50 Hz)</b> <ul style="list-style-type: none"><li>• Brushless</li><li>• No signal noise</li><li>• No rotating coils or diodes</li><li>• Precise control</li><li>• High protection rating</li><li>• Perfect sine wave</li><li>• Short-circuit stability</li><li>• Water-cooled</li><li>• Overload protection</li></ul>

Fischer Panda UK Ltd. 17 Blackmoor Road,  
Ebblake Industrial Estate, Verwood. Dorset BH31 6AX  
Tel: +44 (0)1202 820840 Fax: +44 (0)1202 828688  
[www.fischerpanda.co.uk](http://www.fischerpanda.co.uk)



Standard Features	<ul style="list-style-type: none"><li>• External 12v fuel pump</li><li>• Electrical cabinet</li><li>• Stainless steel sound cover</li><li>• Voltage control system</li><li>• Integrated radiator for temperatures from -20°C up to 35°C</li><li>• Earthing point on frame</li><li>• Fuel tank for 24 hours operation (at 50% load)</li><li>• 12V starter battery</li><li>• 12V/10A Alternator for charging starter battery</li></ul>
Frequency	50 Hz
Generator manufacturer	Fischer Panda GmbH
Isolation class of windings	H
Nominal Speed [rpm]	3000
Voltage Regulation	VCS
Voltage Tolerance with VCS (up to 80% Performance)	± 3V
Power rating factor Cos Pi	0.85
Excitation by	MKP Capacitors

### ***Single Phase Winding - Standard version***

Alternator Type	HP1
Nominal Voltage in Volt	230
Power rating factor Cos Pi	0.85
Nominal Performance in kW <sup>1)</sup>	8.00
Nominal Performance in kVA <sup>1)</sup>	9.4
Continuous Performance in kW <sup>1)</sup>	7.2
Continuous Performance in kVA <sup>1)</sup>	8.5
Number of Phases	1



## Three Phase Version (Optional)

Alternator Type	HP3
Nominal Voltage in Volt [V]	400
Power rating factor Cos Pi	0.85
Nominal Performance in kW <sup>1)</sup>	8.00
Nominal Performance in kVA <sup>1)</sup>	9.4
Continuous Performance in kW <sup>1)</sup>	7.2
Continuous Performance in kVA <sup>1)</sup>	8.5
Number of Phases	3
Frequency [Hz]	50

1) up to Panda 15000 / 12-4 cos Phi 0,85 for short take-off power to inductive loads, otherwise cos Phi1

1) from Panda 18 /17-4 on cos Phi 0,85 optional start up performance with compensation or starting current boost, otherwise cos Phi1

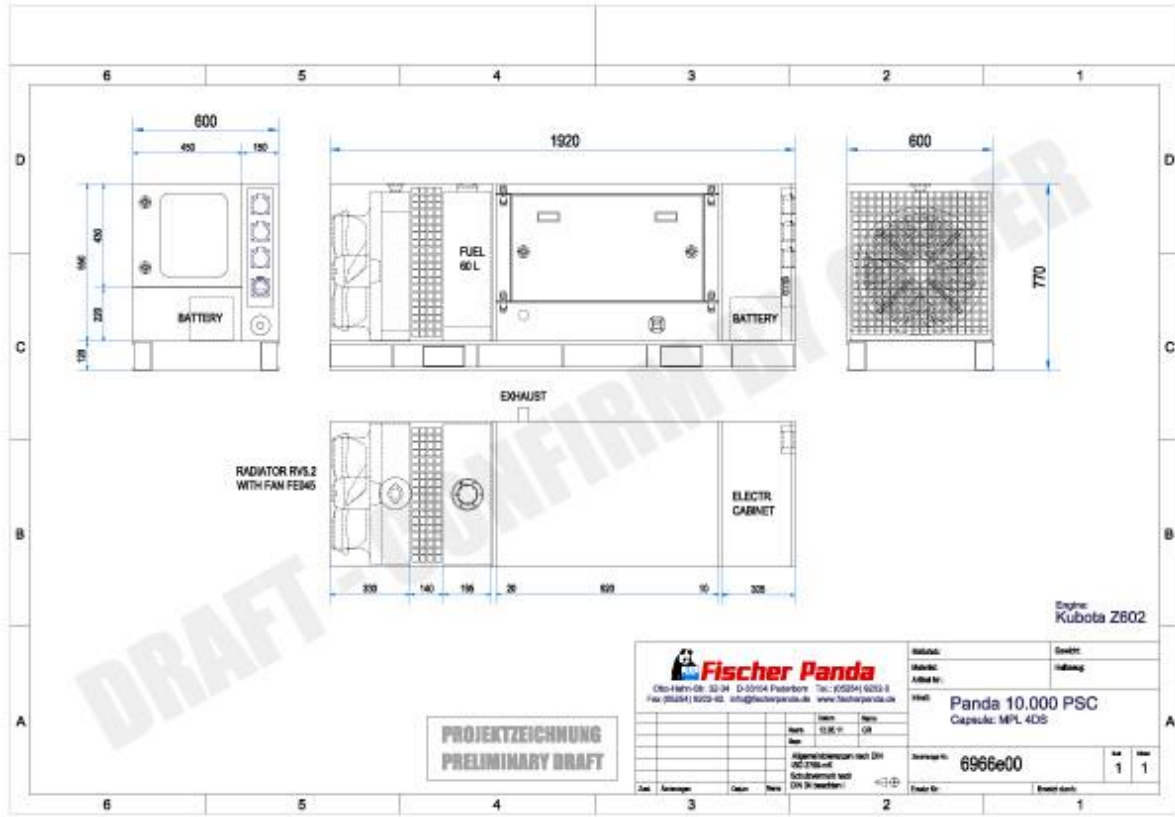
All performance data applies to generator operation at 100m above sea level at 20°C. Performance reductions can occur when operating at greater heights & ambient temperatures

## Engine Data

Engine Manufacturer	Kubota (KU)
Engine Type	Z602
No. Cylinders	2
Displacement [cm <sup>3</sup> ]	599
Starter System	12V (24V Optional)



## Sound Insulation Cover (Generator Housing / Sound Shield)



Version	MPL 4DS (6DS upgrade is available)
Sound Cover Type	MPL (Metal Professional Line) in Brushed Stainless
<p>The dimensions are for the sound insulation housing ONLY and do not include additional parts or fittings such as fasteners, closures or mounting brackets etc.</p> <p><b>Therefore please note:</b> You must consider the additional space will need to be calculated for the installation. This is of importance when planning the installation with respect of cables, hoses and mounting feet.</p>	

Fischer Panda UK Ltd. 17 Blackmoor Road,  
 Ebblake Industrial Estate, Verwood. Dorset BH31 6AX  
 Tel: +44 (0)1202 820840 Fax: +44 (0)1202 828688  
[www.fischerpanda.co.uk](http://www.fischerpanda.co.uk)