

# FISCHER PANDA – SPECIFICATION SHEET

## Panda PMS 18 NE

### Engine:

Type	Kubota – vertical 4-stroke diesel engine type D1105
Cylinder	3
Bore / stroke	78 / 78.4 mm
Displacement	1123 cm <sup>3</sup>
Start system	Electric – 12v
Cooling system	Freshwater-cooled

### Alternator:

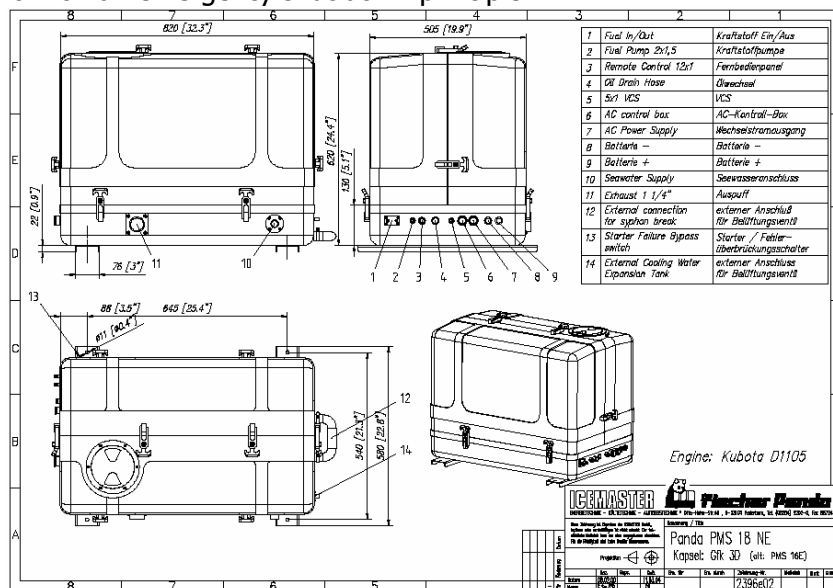
Type	Fischer Panda
Voltage	230v / 50Hz / Single Phase
Polarity	2 – pole
Nominal Frequency	50 Hz +/- 1.5Hz
Nominal Voltage	230V +/- 3 Volt
<b>Nominal Output:</b>	15.3 kW / 18 kVA
Isolation Class	F
Protection Class	IP 54
Regulation	Voltage regulation by patented VCS system
Cooling	Freshwater-cooled

**Dimensions of Generator:** L820mm x W540mm x H620mm,

**Weight:** 308 kg.

The complete generator is mounted inside a super-silent capsule type GRP –3DS. Also fitted to the generator as standard is a 12v DC charging alternator, engine driven water cooling pump, 2 pole DC wiring, built in heat exchanger for the freshwater cooling of both the engine and alternator, VCS voltage control and oil cooled rear bearing.

Supplied with the generator would be remote AC control / booster box, fuel pump, connecting looms, full instruction manual, and remote control panel giving on/off, start/stop, pre-heat, digital hour meter and all warning indications. The warning indications work on an emergency shut down principle.



### Engineered Systems for an Independent Lifestyle

Fischer Panda UK Ltd. 17 Blackmoor Road,

Ebbleke Industrial Estate, Verwood. Dorset BH31 6AX

Tel: +44 (0)1202 820840 Fax: +44 (0)1202 828688 [www.fischerpanda.co.uk](http://www.fischerpanda.co.uk)